

# FUERDA®

# LATHE CHUCKS

**FUERDA** is a world class producer of manual Lathe Chucks with over 30 years of manufacturing experience and production excellence.



- Manufactured to DIN & ANSI standards
- Manufactured with high quality and certified raw materials
- All critical areas are hardened
- All mated surfaces are ground
- Steel body chucks are produced with 2 piece construction for higher accuracy
- Manufactured in state of the art, ISO 9001-2000, facility
- Quality assurance is achieved via a 3 step process to ensure Fuerda's position as a leader in the lathe chuck market.

**AVAILABLE THROUGH:**  
**BASS TOOL**  
**713-682-1889**

- IN STOCK
- FREE LOCAL DELIVERY

## ADJUSTABLE STEEL CHUCKS, 0.0004" TIR *with Fine Adjustment*

### 3-JAW *Scroll Chucks* *with Two-Piece Hard Reversible Jaws*



CHUCK DIA.	HOLE DIA.	RPM MAX.	PART NO. 71-101	PRICE
5"	1.378	3800	0500	<b>401.63</b>
6.1/4"	1.654	3500	0600	<b>446.25</b>
8"	2.165	3100	0800	<b>535.50</b>
10"	2.992	2700	1000	<b>680.00</b>
12.1/2"	4.055	2200	1200	<b>1062.50</b>
15.3/4"	5.354	1800	1600	<b>1666.00</b>
20"	7.480	1200	2000	<b>4250.00</b>
25"	9.921	1000	2500	<b>6600.00</b>

**STEEL**

For Mounting  
Plates use  
P/N: 7FLA-XXX



### 6-JAW *Scroll Chucks* *with Two-Piece Hard Reversible Jaws*

CHUCK DIA.	HOLE DIA.	RPM MAX.	PART NO. 71-103	PRICE
5"	1.378	3000	0500	<b>578.00</b>
6.1/4"	1.654	2500	0600	<b>595.00</b>
8"	2.165	2200	0800	<b>728.88</b>
10"	2.992	1900	1000	<b>935.00</b>
12.1/2"	4.055	1500	1200	<b>1253.75</b>
15.3/4"	5.354	1500	1600	<b>2188.75</b>
20"	7.480	800	2000	<b>5227.50</b>
25"	9.921	700	2500	<b>8880.00</b>

## ADJUSTABLE SEMI-STEEL CHUCKS, 0.0005" TIR *with Fine Adjustment* *with Two Piece Hard Reversible Jaws*



CHUCK DIA.	HOLE DIA.	PART NO. 71-901	PRICE
5"	1.230	0500	<b>223.13</b>
6"	1.540	0600	<b>273.70</b>
8"	2.346	0800	<b>357.00</b>
10"	2.860	1000	<b>490.88</b>
12"	3.285	1200	<b>684.25</b>
15"	4.250	1500	<b>1011.50</b>

**SEMI STEEL**

For Mounting  
Plates use  
P/N: 7FLE-XXX



### 6-JAW

CHUCK DIA.	HOLE DIA.	PART NO. 71-903	PRICE
5"	1.230	0500	<b>297.50</b>
6"	1.540	0600	<b>386.75</b>
8"	2.346	0800	<b>490.88</b>
10"	2.860	1000	<b>669.38</b>
12"	3.285	1200	<b>937.13</b>
15"	4.250	1500	<b>1383.38</b>

## UNIVERSAL SELF CENTERING SEMI-STEEL CHUCKS

### *with Two Piece Hard Reversible Jaws*

#### 3-JAW PLAIN BACK



CHUCK DIA.	HOLE DIA.	MAX HOLE ENLARGEMENTS	RPM MAX.	PART NO. 71-201	PRICE
5"	1.2598	1.3465	3200	0500	<b>204.00</b>
6.1/4"	1.6535	1.9252	3000	0600	<b>223.13</b>
8"	2.1654	2.8189	2500	0800	<b>263.50</b>
10"	2.9921	3.5827	2000	1000	<b>348.50</b>
12.1/2"	4.0551	4.4882	1500	1200	<b>561.00</b>
15.3/4"	5.3543	5.7480	1000	1600	<b>892.50</b>
20"	7.7840	8.3465	700	2000	<b>1870.00</b>
25"	10.2362	12.047	500	2500	<b>2932.50</b>

**SEMI STEEL**

For Mounting  
Plates use Part Numbers:  
Fully Machined: 7FLD-XXX  
Semi Machined: 7FL-XXX

### 3-JAW, Type L



**SEMI STEEL**

### *With Two-Piece Hard Reversible Jaws*

CHUCK DIA.	TAPER SIZE	HOLE DIA.	RPM max.	wt. lbs	PART NO. 71-241	PRICE
6.1/4"	L00	1.6535	3000	23	0601	<b>318.75</b>
	L0				0602	<b>318.75</b>
	L00				0801	<b>374.00</b>
8"	L0	2.1654	2500	42	0802	<b>374.00</b>
	L1				0803	<b>374.00</b>
	L0				1002	<b>488.75</b>
10"	L1	2.9921	2000	64	1003	<b>488.75</b>
	L2				1004	<b>488.75</b>
	L0				1202	<b>722.50</b>
12.1/2"	L2	4.0551	1500	134	1204	<b>722.50</b>

### 3-JAW, Type A1/A2

**SEMI STEEL**



### *With Two-Piece Hard Reversible Jaws*

CHUCK DIA.	TAPER SIZE	HOLE DIA.	RPM max.	wt. lbs	PART NO. 71-211	PRICE
6.1/4"	A1-5	1.6535	3000	22	0605	<b>323.00</b>
	A1-5				0805	<b>382.50</b>
8"	A1-5	2.1653	2500	42	0806	<b>382.50</b>
	A2-5				1005	<b>505.75</b>
10"	A1-6	2.1635	2000	71	1006	<b>505.75</b>
	A1-8				1008	<b>505.75</b>
12.1/2"	A2-6	4.0551	1500	121	1206	<b>692.75</b>
	A1-8				1208	<b>692.75</b>
15.3/4"	A2-6	4.0551	1000	203	1606	<b>1130.50</b>
	A2-8				1608	<b>1130.50</b>
20"	A1-11	5.1181	700	353	1611	<b>1130.50</b>
	A2-11				2011	<b>2295.00</b>
25"	A2-11	7.4900	500	628	2511	<b>4250.00</b>
	A2-15				2515	<b>4250.00</b>

### 3-JAW Type D1

**SEMI STEEL**



### *With Two-Piece Hard Reversible Jaws*

CHUCK DIA.	TAPER SIZE	HOLE DIA.	MAX HOLE ENLARGEMENT	RPM MAX	wt lbs	PART NO. 71-221	PRICE
5	D1-4	1.2598	1.2598	3200	11	0504	<b>272.00</b>
	D1-3					0603	<b>314.50</b>
	D1-4					0604	<b>314.50</b>
6.1/4"	D1-3	1.6535	1.9685	3000	20	0803	<b>401.63</b>
	D1-4					0804	<b>401.63</b>
	D1-5					0805	<b>401.63</b>
8"	D1-6	2.1653	2.6378	2500	42	0806	<b>401.63</b>
	D1-5					1005	<b>505.75</b>
	D1-6					1006	<b>505.75</b>
10"	D1-8	2.9921	3.7402	2000	71	1008	<b>505.75</b>
	D1-6					1206	<b>743.75</b>
	D1-8					1208	<b>743.75</b>
12.1/2"	D1-8	4.0551	4.5276	1500	112	1208	<b>743.75</b>
	D1-11					1211	<b>743.75</b>
	D1-6					1606	<b>1130.50</b>
15.3/4"	D1-8	5.3543	5.3543	1000	223	1608	<b>1130.50</b>
	D1-11					1611	<b>1130.50</b>
	D1-8					2008	<b>2550.00</b>
20"	D1-11	7.5905	7.5984	700	331	2011	<b>2550.00</b>
	D1-11					2511	<b>3825.00</b>
25"	D1-11	7.5905	7.5984	500	604	2511	<b>3825.00</b>

## HARD JAWS FOR 3-JAW SEMI-STEEL UNIVERSAL CHUCKS



CHUCK DIA.	HARD TOP PART#	PRICE	HARD MASTER PART#	PRICE
5"	7TJ-PS3-125	<b>53.55</b>	7MJ-PS3-1275	<b>53.55</b>
6.1/4"	7TJ-PS3-160	<b>68.43</b>	7MJ-PS3-1670	<b>68.43</b>
8"	7TJ-PS3-200	<b>89.25</b>	7MJ-PS3-2070	<b>89.25</b>
10"	7TJ-PS3-250	<b>119.00</b>	7MJ-PS3-2570	<b>119.00</b>
12.1/2"	7TJ-PS3-315	<b>178.50</b>	7MJ-PS3-315	<b>178.50</b>
15.3/4"	7TJ-PS3-400	<b>267.75</b>	7MJ-PS3-400	<b>267.75</b>



# FUERDA<sup>®</sup> LATHE CHUCKS



THE ULTIMATE COMBINATION OF QUALITY, PRECISION AND  
VALUE-BASED ON 30 YEARS OF EXPERIENCE.

## PRECISION STEEL BODY 3-JAW SELF-CENTERING SCROLL CHUCKS WITH TWO-PIECE HARD REVERSIBLE JAWS

3-JAW PLAIN BACK *with 2 Piece Hard Rev. Jaws*

**STEEL**



CHUCK DIA.	HOLE DIA.	RPM MAX.	PART NO. 71-105	PRICE
5"	1.3976	4800	0500	<b>357.00</b>
6.1/4"	1.6535	4500	0600	<b>401.63</b>
8"	2.1654	4000	0800	<b>476.00</b>
10"	2.9921	3500	1000	<b>612.00</b>
12.1/2"	4.0551	2800	1200	<b>943.50</b>
15.3/4"	5.3543	2000	1600	<b>1487.50</b>
20"	7.480	1200	2000	<b>4080.00</b>
25"	9.921	1000	2500	<b>7420.00</b>

For Mounting Plates use Part Nos:  
Full Machined: 7FLD-XXX  
Semi Machined: 7FL-XXX

3-JAW, TYPE D1  
*with 2 Piece Hard Reversible Jaws*

**STEEL**



3-JAW TYPE A1/A2  
*with 2 Piece Hard Reversible Jaws*

**STEEL**



CHUCK DIA.	TAPER SIZE	HOLE DIA.	RPM MAX.	WT LBS	PART NO. 71-115	PRICE
6.1/4"	A1-5	1.6535	4500	22	0605	<b>420.75</b>
	A1-5	1.6535	4500	42	0805	<b>561.00</b>
8"	A1-6	2.1653	4000	71	0806	<b>561.00</b>
	A1-8	3.1496	3500	71	1006	<b>807.50</b>
10"	A1-8	2.9921	3500	71	1008	<b>739.50</b>
	A1-11	5.1181	2800	121	1206	<b>1147.50</b>
12.1/2"	A1-6	2.1635	4000	71	1006	<b>807.50</b>
	A1-8	3.1496	3500	71	1008	<b>739.50</b>
15.3/4"	A2-8	5.3543	2000	203	1608	<b>1700.00</b>
	A1-11	5.1181	2800	121	1206	<b>1147.50</b>
20"	A2-8	5.3543	2000	203	1611	<b>1933.75</b>
	A2-11	7.4803	1200	353	2008	<b>5355.00</b>
25"	A2-11	7.4803	1000	628	2511	<b>7440.00</b>
	A2-15	9.9213	1000	628	2515	<b>7440.00</b>

CHUCK DIA.	TAPER SIZE	HOLE DIA.	RPM MAX.	WT LBS	PART NO. 71-125	PRICE
6.1/4"	D1-3				0603	<b>442.00</b>
	D1-4	1.6535	4500	20	0604	<b>442.00</b>
	D1-5				0605	<b>442.00</b>
8"	D1-5	2.1653	4000	42	0805	<b>561.00</b>
	D1-6				0806	<b>561.00</b>
10"	D1-6	2.9921	3500	71	1006	<b>748.00</b>
	D1-8				1008	<b>748.00</b>
12.1/2"	D1-6	4.0551	2800	112	1206	<b>1147.50</b>
	D1-8				1208	<b>1147.50</b>
15.3/4"	D1-8	5.3543	2000	223	1608	<b>1657.50</b>
	D1-11				1611	<b>1657.50</b>
20"	D1-8	5.3543	1200	331	2008	<b>4590.00</b>
	D1-11	7.5984	1200	331	2011	<b>5355.00</b>
25"	D1-8	5.3543	1000	604	2508	<b>8680.00</b>
	D1-11	7.4803	1000	604	2511	<b>8680.00</b>

## 4-JAW INDEPENDENT CHUCKS - SEMI STEEL BODY

4-JAW PLAIN BACK

Two Options Available

1. With Solid Rev. Jaws
2. With 2-Piece Hard Rev. Jaws



CHUCK DIA.	THRU HOLE	WITH SOLID JAWS		WITH 2 PIECE REV. JAWS	
		PART NO. 71-302	PRICE	PART NO. 71-301	PRICE
3.1/4"	0.866	0300	<b>119.00</b>	-	-
4"	0.984	0400	<b>133.88</b>	-	-
5"	1.181	0500	<b>178.50</b>	-	-
6.1/4"	1.772	0600	<b>193.38</b>	-	-
8"	2.205	0800	<b>223.13</b>	0800	<b>297.50</b>
10"	2.559	1000	<b>297.50</b>	1000	<b>386.75</b>
12.1/2"	3.150	1200	<b>371.88</b>	1200	<b>490.88</b>
15.3/4"	3.937	1600	<b>476.00</b>	1600	<b>624.75</b>
20"	4.921	2000	<b>892.50</b>	2000	<b>1160.25</b>
25"	6.299	2500	<b>1338.75</b>	2500	<b>1740.38</b>
32"	8.268	3200	<b>2167.50</b>	3200	<b>3421.25</b>
40"	10.236	4000	<b>4760.00</b>	4000	<b>5824.00</b>
50"	12.008	5000	<b>7000.00</b>	5000	<b>9100.00</b>
55"	12.008	5500	<b>14000.00</b>	-	-

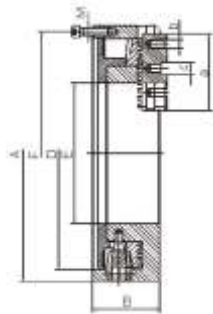
\* For Mounting Plates use Part Nos.: 7FL-XXX

4-JAW INDEPENDENT  
TYPE D1 *Solid Jaws*

CHUCK DIA.	TAPER NO	THRU HOLE	PART# 71-322	PRICE
8"	D1-4	2.205	0804	<b>282.63</b>
	D1-5		0805	<b>282.63</b>
10"	D1-4	2.205	1004	<b>371.88</b>
	D1-5		1005	<b>371.88</b>
12.1/2"	D1-6	2.953	1006	<b>371.88</b>
	D1-6	2.953	1206	<b>461.13</b>
15.3/4"	D1-6	2.953	1206	<b>461.13</b>
	D1-8	3.740	1208	<b>461.13</b>
20"	D1-6	2.953	1606	<b>595.00</b>
	D1-8	4.921	1608	<b>595.00</b>
25"	D1-11	6.299	1611	<b>595.00</b>
	D1-8	4.921	2008	<b>1115.63</b>
32"	D1-11	6.299	2011	<b>1115.63</b>
	D1-11	7.087	2511	<b>1666.00</b>

3-JAW, LARGE THRU-HOLE STEEL BODY

PLAIN BACK, HEAVY DUTY *With Two-Piece Reversible Jaws*



For Pipe Machining  
Welding Operations  
Cutoff Operations or any Application  
Where Large Thru-Hole is Required.



For Mounting Plates use Part Nos: 7FL-XXX

CHUCK DIA. A	THRU HOLE E	JAW STROKE		WT. OF WORKPIECE		B	F	D	a	M	b	WT. LBS	MAX RPM	PART NO. 71-207	PRICE
		min.	max.	without support	with support										
15.3/4"	8.66	6.614	11.34	110	3307	4.13	15.000	14.252	4.72	M12x40	5/8"-1	128	500	1600	<b>1636.25</b>
20"	12.60	9.874	14.96	177	5512	4.72	18.957	18.189	4.72	M12x40	3/4"-10	168	350	2000	<b>3060.00</b>
26"	15.98	14.80	19.57	265	7716	5.32	24.409	22.835	5.00	M16x40	3/4"-10	258	250	2600	<b>6120.00</b>

4-JAW INDEPENDENT  
TYPE A1/A2 *Solid Jaws*

CHUCK DIA.	TAPER NO	THRU HOLE	PART# 71-312	PRICE
8"	A2-5	2.205	0805	<b>282.63</b>
	A2-5		1005	<b>371.88</b>
10"	A2-6	2.953	1006	<b>371.88</b>
	A2-8		1008	<b>371.88</b>
12.1/2"	A2-5	2.953	1205	<b>461.13</b>
	A2-6		1206	<b>461.13</b>
15.3/4"	A2-6	3.740	1606	<b>595.00</b>
	A2-8	4.921	1608	<b>595.00</b>
20"	A2-11	6.299	1611	<b>595.00</b>
	A2-8	5.366	2008	<b>1115.63</b>
25"	A2-11	6.299	2011	<b>1115.63</b>
	A2-11	7.087	2511	<b>1530.00</b>
32"	A2-15	9.488	2515	<b>1530.00</b>
	A2-11	7.087	3211	<b>2635.00</b>
40"	A2-15	7.087	3215	<b>2635.00</b>
	A2-11	7.087	4011	<b>5950.00</b>
50"	A2-15	11.024	4015	<b>5950.00</b>

**(713) 682-1889 FREE LOCAL DELIVERY**