



TOOLS THAT MEASURE UP!

Electronic Calipers - Coolant Proof



IP67

- ▶ Resolution: 0.0005"/0.01mm
- ▶ Coolant proof, IP67 Ingress protection level
- ▶ Buttons: zero set/power on, inch/mm conversion
- ▶ Auto power off
- ▶ Battery CR2032, includes one spare battery
- ▶ DIN862, hardened stainless steel construction, with locking clamp and thumb wheel for outside, inside, depth and step measurements
- ▶ Supplied in fitted storage case

Range (Inch/mm)	Item #	Price
0-6/0-150	1118-150	\$ 165.70
0-8/0-200	1118-200	247.70
0-12/0-300	1118-300	293.70

Electronic Calipers



SPC

- ▶ Resolution: 0.0005"/0.01mm
- ▶ Buttons: zero set, power on/off, inch/mm conversion
- ▶ Recessed zero button prevents it from being pressed by accident
- ▶ Battery SR44, includes one spare battery
- ▶ DIN862, hardened stainless steel construction, with locking clamp and thumb wheel, for outside, inside, depth and step measurements
- ▶ Data output via USB
- ▶ Supplied in fitted storage case

Range (Inch/mm)	Item #	Price
0-6/0-150	1112-150	\$ 49.50
0-8/0-200	1112-200	74.60
0-12/0-300	1112-300	114.70
SPC Cable 7301-SPC1		\$ 196.70

SPC Software for PC included with cable

Fractional Reading Electronic Calipers - Coolant Proof



IP54
SPC

- ▶ Resolution: 0.0005", 1/128" (fractional), 0.01mm
- ▶ Coolant proof, IP54 Ingress protection level
- ▶ Buttons: zero set, mm/inch/fraction conversion, ABS/INC, power on/off
- ▶ Auto power off
- ▶ Battery CR2032, includes one spare battery
- ▶ DIN862, hardened stainless steel construction, with locking clamp and thumb wheel, for outside, inside, depth and step measurements
- ▶ Data output via USB
- ▶ Supplied in fitted storage case

Range (Inch/mm)	Item #	Price
0-6/0-150	1102-150	\$ 78.30
0-8/0-200	1102-200	107.70
0-12/0-300	1102-300	139.00
SPC Cable 7301-SPC4		\$ 106.00

SPC Software for PC included with cable

Electronic Calipers with Metal Case



- ▶ Resolution: 0.0005"/0.01mm
- ▶ Die cast zinc alloy casing
- ▶ Buttons: zero set, power on/off, inch/mm conversion
- ▶ Battery SR44, includes one spare battery
- ▶ DIN862, hardened stainless steel construction, with locking clamp and thumb wheel, for outside, inside, depth and step measurements
- ▶ Supplied in fitted storage case

Range (Inch/mm)	Item #	Price
0-6/0-150	1114-150	\$ 73.90
0-8/0-200	1114-200	100.60
0-12/0-300	1114-300	149.90

DISTRIBUTED BY:

High Accuracy Electronic Calipers - Coolant Proof

- ▶ Accuracy exceeds DIN862
- ▶ Resolution: 0.0005"/0.005mm
- ▶ Coolant proof, IP54 Ingress protection level
- ▶ Buttons: zero set, power on/off, inch/mm conversion, absolute and incremental measurements
- ▶ Battery CR2032, includes one spare battery
- ▶ Data output via USB
- ▶ Hardened stainless steel construction
- ▶ Supplied in fitted storage case



Range (Inch/mm)	Item #	Price
0-6/0-150	1101-150	\$ 85.40
0-8/0-200	1101-200	123.80
0-12/0-300	1101-300	163.50

SPC Cable 7301-SPC4 \$ 106.00

SPC Software for PC included with cable

Electronic Calipers with Carbide Tipped Jaws



- ▶ Resolution: 0.0005"/0.01mm
- ▶ Wear resistant carbide tipped outside and inside jaws for inside and outside measurements
- ▶ Buttons: zero set, power on/off, inch/mm conversion
- ▶ Recessed zero button prevents it from being pressed by accident
- ▶ Battery SR44, includes one spare battery
- ▶ DIN862, hardened stainless steel construction
- ▶ Data output via USB
- ▶ Supplied in fitted storage case

Range (Inch/mm)	Item #	Price
0-6/0-150	1110-150	\$ 178.60
0-8/0-200	1110-200	219.20
0-12/0-300	1110-300	302.00
SPC Cable	7301-SPC1	\$ 196.70

SPC Software for PC included with cable

Long Range Electronic Calipers (12 to 80 Inches)



- ▶ Resolution: 0.0005"/0.01mm
- ▶ Round faces of lower jaws are ideal for accurate inside measurements
- ▶ Buttons: power on/off, inch/mm conversion, absolute and incremental measurements, data preset, set data
- ▶ Battery CR2032, includes one spare battery
- ▶ Data output via USB
- ▶ Hardened stainless steel construction, with locking screw and fine adjustment for outside and inside measurements
- ▶ Supplied in fitted storage case

Range (Inch/mm)	Lower Jaw Length (Inch/mm)	Internal Jaw Width (Inch/mm)	Item #	Price
0-12/0-300	2.95/75	0.500/12.7	1133-127	\$ 298.10
0-20/0-500	3.9/100	0.787/20	1136-501	470.90
0-24/0-600	3.9/100	0.500/12.7	1133-24	628.90
0-24/0-600	3.9/100	0.787/20	1136-601	606.40
0-24/0-600	5.9/150	0.787/20	1136-602	716.60
0-40/0-1000	5.9/150	0.800/20.32	1133-40	1,326.00
0-40/0-1000	5.9/150	0.787/20	1136-1002	1,303.20
0-60/0-1500	5.9/150	0.787/20	1136-1502	2,195.50
0-80/0-2000	5.9/150	0.787/20	1136-2002	3,233.00
SPC Cable			7301-SPC1	\$ 196.70

SPC Software for PC included with cable

Dial Calipers



- ▶ DIN862, hardened stainless steel construction, satin chrome clamp and thumb wheel
- ▶ Shock proof dial indicator, adjustable bezel with bezel locking clamp
- ▶ For outside, inside, depth and step measurements
- ▶ Supplied in fitted storage case

INCH

Range (Inch)	Graduation (Inch)	Item #	Price
0-6	0.001	1311-6	\$ 49.00
0-8	0.001	1311-8	66.00
0-12	0.001	1311-12	119.00

METRIC

Range (mm)	Graduation (mm)	Item #	Price
0-150	0.01	1311-150	\$ 73.80
0-200	0.01	1311-200	99.80
0-300	0.01	1311-300	149.10

Long Range Vernier Calipers



- ▶ Graduations: 0.001"/0.02mm
- ▶ Round faces of lower jaws are ideal for accurate inside measurements
- ▶ With locking screw and fine adjustment
- ▶ DIN862, monoblock, hardened stainless steel construction with satin chrome plated reading surface
- ▶ Supplied in fitted storage case

Range (Inch/mm)	Jaw Length (Inch/mm)	Internal Jaw Width (Inch/mm)	Item #	Price
0-24/0-600	3.9/100	0.787/20	1208-612	\$ 389.00
0-40/0-1000	5.9/150	0.787/20	1208-1022	965.70

Vernier Calipers



INCH/METRIC

Range (Inch/mm)	Graduation (Inch/mm)	Item #	Price
0-6/0-150	0.001/0.05	1205-1502	\$ 43.00
0-8/0-200	0.001/0.05	1205-2002	64.40
0-12/0-300	0.001/0.05	1205-3002	110.40

- ▶ Thumb slide knob
- ▶ DIN862, monoblock, hardened stainless steel construction with satin chrome plated reading surface
- ▶ Supplied in fitted storage case

METRIC

Range (mm)	Graduation (mm)	Item #	Price
0-150	0.02	1205-1501	\$ 42.20
0-200	0.02	1205-2001	62.30
0-300	0.02	1205-3001	106.30

Electronic Depth Calipers



- ▶ Resolution: 0.0005"/0.01mm
- ▶ DIN862, hardened stainless steel construction
- ▶ Stainless steel, hardened beam and base
- ▶ Buttons: zero set, power on/off, inch/mm conversion
- ▶ Recessed zero button prevents it from being pressed by accident
- ▶ Battery SR44, includes one spare battery
- ▶ Data output via USB
- ▶ Supplied in fitted storage case

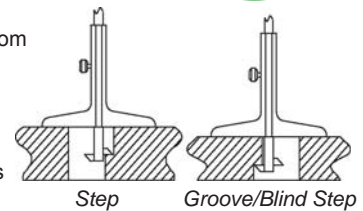
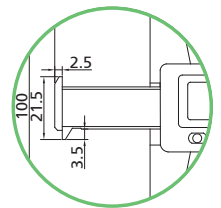
Range (Inch/mm)	Base Length (Inch/mm)	Item #	Price
0-6/0-150	4/100	1141-150	\$ 79.20
0-8/0-200	4/100	1141-200	98.40
0-12/0-300	6/150	1141-300	232.20
SPC Cable		7301-SPC1	\$ 196.70

SPC Software for PC included with cable

Electronic Depth Calipers with Two Hooks



- ▶ Resolution: 0.0005"/0.01mm
- ▶ DIN862, hardened stainless steel construction
- ▶ Buttons: zero set, power on/off, inch/mm conversion
- ▶ Recessed zero button prevents it from being pressed by accident
- ▶ Battery SR44, includes one spare battery
- ▶ Data output via USB
- ▶ For step and groove measurements
- ▶ Supplied in fitted storage case



Range (Inch/mm)	Base Length (Inch/mm)	Item #	Price
0-6/0-150	4/100	1144-150	\$ 105.60
0-8/0-200	4/100	1144-200	125.90
0-12/0-300	6/150	1144-300	272.60
SPC Cable		7301-SPC1	\$ 196.70

SPC Software for PC included with cable

Depth Base Attachment for 6 and 8 Inch Calipers

- ▶ Fits Insize calipers up to 8"/200mm
- ▶ Stainless steel
- ▶ Locking clamp



Base Length (Inch/mm)	Item #	Price
3/76	6140	\$ 19.30

Outside Micrometer with Interchangeable Anvils

- ▶ Interchangeable anvils for different measuring ranges
- ▶ With ratchet stop to fix anvils in place
- ▶ Graduation: 0.0001"
- ▶ DIN863
- ▶ Cast frame
- ▶ Ratchet stop, carbide tips
- ▶ Zero adjusting wrench
- ▶ Supplied with setting standards
- ▶ Supplied in fitted storage case



Range (Inch/mm)	Item #	Price
0-6/0-150	3206-6	\$ 230.50
6-12/150-300	3206-12	288.40

Outside Micrometers



3203-25



3203-50

INDIVIDUAL MICROMETERS

Range (Inch)	Inch Item #	Range (mm)	Metric Item #	Price
0-1	3203-1	0-25	3203-25	\$ 32.40
1-2	3203-2	25-50	3203-50	36.10
2-3	3203-3	50-75	3203-75	40.10
3-4	3203-4	75-100	3203-100	45.40
4-5	3203-5	100-125	3203-125	56.10
5-6	3203-6	125-150	3203-150	63.50
6-7	3203-7	150-175	3203-175	72.00
7-8	3203-8	175-200	3203-200	81.00
8-9	3203-9	200-225	3203-225	89.30
9-10	3203-10	225-250	3203-250	95.00
10-11	3203-11	250-275	3203-275	109.50
11-12	3203-12	275-300	3203-300	116.90

- ▶ Graduation: 0.0001"/0.01mm
- ▶ DIN863, painted frame, ratchet stop, spindle lock, carbide tips, adjusting wrench
- ▶ Micrometers over 1"/25mm are supplied with a setting standard
- ▶ Supplied in fitted storage case
- ▶ Sets include all features above PLUS applicable setting standards

MICROMETER SETS

Range (Inch)	Inch Item #	Range (mm)	Metric Item #	Price
0-3 (3 pcs)	3203-33	0-75 (3 pcs)	3203-753	\$ 95.00
0-4 (4 pcs)	3203-44	0-100 (4 pcs)	3203-1004	139.50
0-6 (6 pcs)	3203-66	0-150 (6 pcs)	3203-1506	246.10
6-12 (6 pcs)	3203-126	150-300 (6 pcs)	3203-3006	477.00
0-12 (12 pcs)	3203-1212	0-300 (12 pcs)	3203-3012	696.00

Electronic Outside Micrometers

- ▶ Resolution: 0.00005"/0.001mm
- ▶ Buttons: power on/off, inch/mm conversion, absolute and incremental measurement, data set
- ▶ Auto power off
- ▶ SR44 battery, includes one spare battery
- ▶ DIN863, painted and insulated frame, ratchet friction thimble, spindle lock, with battery cover wrench, carbide tips
- ▶ Spherical anvil included allows tube thickness measurements
- ▶ Micrometers over 0-1"/0-25mm are supplied with a setting standard
- ▶ Supplied in fitted storage case

Spherical Anvil included



Range (Inch/mm)	Item #	Price
0-1/0-25	3109-25E	\$ 96.30
1-2/25-50	3109-50E	114.50
2-3/50-75	3109-75E	137.20
3-4/75-100	3109-100E	149.30
4-5/100-125	3109-125E	185.60
5-6/125-150	3109-150E	210.10

Electronic Outside Micrometers - Coolant Proof

- ▶ Resolution: 0.00005"/0.001mm
- ▶ Coolant proof, IP65 Ingress protection level
- ▶ Thimble graduation: 0.0001"
- ▶ Buttons: power on/off, inch/mm conversion, absolute and incremental measurement, data set
- ▶ Data output via RS232 (RS232 cable included, SPC connection cable optional)
- ▶ Auto power off
- ▶ SR44 battery, includes one spare battery
- ▶ DIN863, painted and insulated frame, ratchet stop, spindle lock, with battery cover wrench, carbide tips
- ▶ Spherical anvil included allows tube thickness measurements
- ▶ Micrometers over 0-1"/0-25mm are supplied with a setting standard
- ▶ Supplied in fitted storage case

Spherical Anvil included



Range (Inch/mm)	Item #	Price
0-1/0-25	3101-25E	\$ 222.40
1-2/25-50	3101-50E	237.30
2-3/50-75	3101-75E	265.40
SPC Cable	7310-SPC2	\$ 75.00

SPC Software for PC included with cable

Blade Micrometers

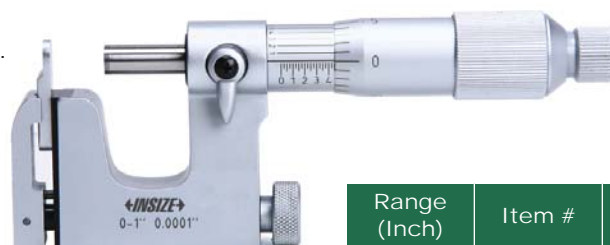
- ▶ Graduation: 0.0001"
- ▶ Non-rotating spindle
- ▶ Ratchet stop
- ▶ Zero adjusting wrench
- ▶ Blade tips on anvil and spindle allow measurements of groove diameters of shafts and keyways
- ▶ Blade tip: 0.030" thick by 0.240" wide by 0.250" long
- ▶ Micrometers over 0-1" are supplied with a setting standard
- ▶ Supplied in fitted storage case



Range (Inch)	Item #	Price
0-1	3232-1	\$ 172.70
1-2	3232-2	187.00
2-3	3232-3	200.60
3-4	3232-4	220.50
4-5	3232-5	247.40
5-6	3232-6	269.80
6-7	3232-7	291.30

Uni-Micrometers

- ▶ Graduation: 0.0001"
- ▶ For measuring tube thickness, shoulder edge distance, rivet head height, etc.
- ▶ With flat anvil and rod anvil
- ▶ Ratchet friction thimble, carbide spindle tip and zero adjusting wrench
- ▶ Supplied with a setting standard
- ▶ Supplied in fitted storage case



Range (Inch)	Item #	Price
0-1	3262-1	\$ 156.90
1-2	3262-2	182.90

Screw Thread Micrometers

- ▶ Graduation: 0.001"
- ▶ Measures pitch diameter of screw threads
- ▶ Non-rotating spindle, ratchet stop
- ▶ Zero adjusting wrench
- ▶ Supplied with 60 degree setting standards.
55 degree setting standards are sold separately (NOTE: 0-1" does not require a setting standard)
- ▶ Measuring tips are sold separately
- ▶ Supplied in fitted storage case



*Interchangeable
Measuring Tips
Sold Separately*

Range (Inch)	Item #	Price
0-1	3281-1	\$ 111.90
1-2	3281-2	124.80
2-3	3281-3	145.70
3-4	3281-4	159.60
4-5	3281-5	183.60
5-6	3281-6	206.70

Measuring Tips for Screw Thread Micrometers

- ▶ Made of bearing steel

6-Piece Set

UNIFIED SCREW AND METRIC (for 60 degree threads)

Pitch (Threads per Inch/mm)	Item #	Price
64-3.5/0.4-7	7381-T1S	\$ 128.00

10-Piece Set

WHITWORTH SCREW (for 55 degree threads)

Pitch (Threads per Inch)	Item #	Price
60-3.5	7381-T2S	\$ 205.00



55° Whitworth Thread Micrometer Setting Standards



Description	Item #	Price
1" standard for 0-1" micrometers	3281-SPE1	\$ 91.80
2" standard for 1-2" micrometers	3281-SPE2	105.20
3" standard for 2-3" micrometers	3281-SPE3	119.90
4" standard for 3-4" micrometers	3281-SPE4	137.80
5" standard for 4-5" micrometers	3281-SPE5	157.20
6" standard for 5-6" micrometers	3281-SPE6	179.20

Deep Throat Outside Micrometers

- ▶ Graduation: 0.0001"
- ▶ Throat depth: 6"
- ▶ Flat carbide tips
- ▶ Ratchet stop
- ▶ Zero adjusting wrench
- ▶ 1-2" micrometer supplied with setting standard
- ▶ Supplied in fitted storage case



Range (Inch)	Item #	Price
0-1	3239-13	\$ 118.00
1-2	3239-23	123.60

Micrometer Stands



Description	Item #	Price
Compact stand with 1 locking handle	6300	\$ 38.60
Cast stand with 2 separate locking handles	6301	31.30

6300

6301

Micrometer Heads

- ▶ Graduation: 0.001"/0.01mm
- ▶ Neck diameter: 0.4724" ±0.0004"/12mm ±0.011mm
- ▶ Neck length: 0.689"/17.5mm
- ▶ Flat carbide tip
- ▶ Ratchet stop
- ▶ Adjustment wrench included



Range	Item #	Price
0-1"	6372-1	\$ 31.90
0-25mm	6372-25	31.90

Micrometer Heads with Non-Rotating Spindles

- ▶ Graduation: 0.001"/0.01mm
- ▶ Neck diameter: 0.4724" ±0.0004"/12mm ±0.011mm
- ▶ Neck length: 0.394"/10mm
- ▶ Flat carbide tip
- ▶ Adjustment wrench included



Range	Item #	Price
0-1"	6377-1	\$ 69.40
0-25mm	6377-25	69.40

Electronic Micrometer Head

- ▶ Resolution: 0.00005"/0.001mm
- ▶ Neck diameter: 0.4724" ±0.0004"/12mm ±0.011mm
- ▶ Neck length: 0.689"/17.5mm
- ▶ Buttons: on/off, inch/mm, ABS/INC, data set
- ▶ Auto power off
- ▶ IP54 Ingress protection level
- ▶ Flat carbide tip
- ▶ Ratchet friction thimble
- ▶ Adjustment wrench included
- ▶ Supplied in fitted storage case



Range (Inch/mm)	Item #	Price
0-1/0-25	6351-25	\$ 213.10

Dial Indicators

- ▶ Meets DIN878 or ANSI B89.1.10 standard
- ▶ Metric Indicator: Stem diameter 8mm, Bezel diameter 60mm
- ▶ Inch Indicator: Stem diameter 3/8", Bezel diameter 2.36"
- ▶ Lug back
- ▶ Bezel locking clamp and tolerance index
- ▶ Aluminum body
- ▶ Continuous reading dial 0-100
- ▶ Contact point thread for inch indicator: #4-48UNF
- ▶ Contact point thread for metric indicator: M2.5 x 0.45
- ▶ Supplied in fitted storage case



INCH

Range (Inch)	Graduation (Inch)	Item #	Price
0-0.5	0.001	2307-05	\$ 31.50
0-1	0.001	2307-1	30.00
0-2	0.001	2307-2	69.70

METRIC

Range (mm)	Graduation (mm)	Item #	Price
0-15	0.1	2318-15	\$ 69.10
0-25	0.1	2318-25	77.10

Precision Dial Indicator - Inch

- ▶ Meets ANSI B89.1.10 standard
- ▶ Bezel diameter: 2.36"
- ▶ Stem diameter: 3/8"
- ▶ Shock proof, jeweled
- ▶ Lug back
- ▶ Bezel locking clamp and tolerance index
- ▶ Aluminum body
- ▶ Contact point thread #4-48UNF
- ▶ Supplied in fitted storage case



Range (Inch)	Graduation (Inch)	Item #	Price
0-0.05	0.0001	2315-05	\$ 111.70

Dial Indicator - Inch

- ▶ Meets ANSI B89.1.10 standard
- ▶ Bezel diameter: 3"
- ▶ Stem diameter: 3/8"
- ▶ Lug back
- ▶ Bezel locking clamp and tolerance index
- ▶ Aluminum body
- ▶ Contact point thread #4-48UNF
- ▶ Supplied in fitted storage case



Range (Inch)	Graduation (Inch)	Item #	Price
0-1.5	0.001	2312-15	\$ 68.90
0-2	0.001	2312-2	77.80

Electronic Indicators

- ▶ Rotating display head
- ▶ Stem diameter: 3/8"
- ▶ Buttons: inch/mm, zero set, power on/off, mode – to find the difference between min. and max. readings, "+/-" – for measuring direction change from zero set
- ▶ Data output via USB
- ▶ Auto power off
- ▶ CR2032 battery, includes spare battery
- ▶ Lug back
- ▶ Contact point thread #4-48UNF
- ▶ Supplied in fitted storage case



Range (Inch/mm)	Resolution (Inch/mm)	Item #	Price
0-0.5/0-10	0.0005/0.005	2102-10E	\$ 107.40
0-1/0-25	0.0005/0.005	2102-25E	124.70
SPC Cable		7303-SPC3	\$ 128.00

SPC Software for PC included with cable

Long Range Electronic Indicators

- ▶ Buttons: inch/mm, ABS, zero set
- ▶ Auto power off
- ▶ Lug back and flat back supplied
- ▶ CR2032 battery
- ▶ Stem diameter: 3/8"
- ▶ Data output via USB
- ▶ Contact point thread #4-48UNF
- ▶ Supplied in fitted storage case



Range (Inch/mm)	Resolution (Inch/mm)	Item #	Price
0-2/0-50	0.0002/0.005	2107-50E	\$ 350.10
SPC Cable		7303-SPC2	\$ 149.20

SPC Software for PC included with cable

Dial Test Indicators



- ▶ Meets DIN2270 or BS2795 standard
- ▶ Satin chrome finish, brass body, anti-magnetic
- ▶ Jeweled bearing, shock-proof
- ▶ Interchangeable carbide contact point, 0.0787"/2mm diameter ball, supplied with wrench
- ▶ Probe length: 0.530"/13.5mm
- ▶ Two holding stems: 5/32"/4mm and 3/8"/8mm
- ▶ Supplied in fitted storage case

INCH

Range (Inch)	Graduation (Inch)	Bezel Diameter (Inch)	Item #	Price
0-0.03	0.001	1.18	2380-31	\$ 64.60
0-0.03	0.001	1.48	2381-31	75.10
0-0.03	0.0005	1.18	2380-35	80.40
0-0.03	0.0005	1.48	2381-35	86.20

METRIC

Range (mm)	Graduation (mm)	Bezel Diameter (mm)	Item #	Price
0-0.8	0.01	30	2380-08	\$ 70.40

Long Range Dial Test Indicators



- ▶ Steel contact point, 0.0787"/2mm diameter ball
- ▶ Probe length: 5/8"/16mm
- ▶ Holding stem: 5/32"/4mm
- ▶ Supplied in fitted storage case

INCH

Range (Inch)	Graduation (Inch)	Bezel Diameter (Inch)	Item #	Price
±0.06	0.0005	1.51	2386-006	\$ 139.50

METRIC

Range (mm)	Graduation (mm)	Bezel Diameter (mm)	Item #	Price
±1.6	0.01	38.4	2386-16	\$ 138.40

Magnetic Stands

Dual Stem Magnetic Stand

- ▶ Main stem: Ø0.470" x 6.930"
- ▶ Assistant stem: Ø3.940" x 6.300"
- ▶ Clamp hole: 3/8" diameter plus 8mm sleeve
- ▶ For dial indicators with lug back or flat back
- ▶ Base: 2.4" x 2" x 2.2" with on/off switch



Magnetic Force (lbf)	Item #	Price
132	6200-60	\$ 26.40

Universal Magnetic Stand

- ▶ With fine adjustment
- ▶ Overall stem length: 13.4"
- ▶ Dovetail groove for test indicator
- ▶ Clamp hole: 3/8" diameter plus 8mm sleeve
- ▶ For dial indicators with lug back or flat back
- ▶ Base: 2.4" x 2" x 2.2" with on/off switch



Magnetic Force (lbf)	Item #	Price
176	6208-80	\$ 62.70

Dual Stem Magnetic Stand

- ▶ With fine adjustment
- ▶ Main stem: Ø0.470" x 6.930"
- ▶ Assistant stem: Ø3.940" x 6.300"
- ▶ Clamp hole: 3/8" diameter plus 8mm sleeve
- ▶ For dial indicators with lug back or flat back
- ▶ Base: 2.4" x 2" x 2.2" with on/off switch



Magnetic Force (lbf)	Item #	Price
132	6201-60	\$ 24.40

Universal Magnetic Stand with Heavy Duty Stem Assembly

- ▶ Heavy duty universal with fine adjustment
- ▶ Overall stem length: 13.4"
- ▶ Dovetail groove for dial test indicators
- ▶ Clamp hole: 3/8" diameter plus 8mm sleeve
- ▶ For dial indicators with lug back or flat back
- ▶ Base: 2.4" x 2" x 2.2" with on/off switch



Magnetic Force (lbf)	Item #	Price
176	6205-80	\$ 115.20

Heavy Duty High Force Magnetic Stand

- ▶ Heavy duty with fine adjustment
- ▶ Main stem: Ø0.787" x 14.175"
- ▶ Assistant stem: Ø0.470" x 14.175"
- ▶ Clamp hole: 3/8" diameter plus 8mm sleeve
- ▶ For dial indicators with lug back or flat back
- ▶ Base: 2.9" x 2" x 2.2" with on/off switch



Magnetic Force (lbf)	Item #	Price
220.5	6202-100	\$ 64.40

Flex Arm Magnetic Stand

- ▶ Flexible arm
- ▶ Overall arm length: 13"
- ▶ Single lever operation to lock arm in place
- ▶ For dial indicators with stem diameter 3/8" and 8mm
- ▶ Base: 2.4" x 2" x 2.2" with on/off switch



Magnetic Force (lbf)	Item #	Price
176	6207-80A	\$ 49.50

Depth Micrometers

- ▶ Graduation: 0.001"
- ▶ Flat measuring end on depth rod
- ▶ Ratchet stop
- ▶ Supplied with adjusting wrench
- ▶ Includes measuring rods
- ▶ Supplied with ratchet stop to secure measuring rods
- ▶ Supplied in fitted storage case



Range (Inch)	2.5 Inch Base		4 Inch Base	
	Item #	Price	Item #	Price
0-1	3241-B1	\$ 85.60	3241-1	\$ 85.60
0-4	3241-B4	138.60	3241-4	138.60
0-6	–	–	3241-6	168.80
0-8	–	–	3241-8	206.60
0-12	–	–	3241-12	271.30

Dial Indicator Depth Gages

- ▶ Hardened stainless steel base
- ▶ Three rod lengths with spherical ends to allow measurements from: 0-0.4", 0.4-0.8", 0.8-1.2" or 0-10mm, 10-20mm, 20-30mm
- ▶ Supplied in fitted storage case



INCH

Range (Inch)	Indicator Range (Inch)	Indicator Graduation (Inch)	Base (Inch)	Item #	Price
0-1.2	0-0.5	0.001	4 x 0.67	2341-E2	\$ 72.80

METRIC

Range (mm)	Indicator Range (mm)	Indicator Graduation (mm)	Base (mm)	Item #	Price
0-30	0-10	0.01	101.5 x 17	2341-102	\$ 84.80

Electronic Indicator Depth Gage

- ▶ Hardened stainless steel base
- ▶ Buttons: inch/mm conversion, power on/off, zero set
- ▶ Three rod lengths with spherical ends to allow measurements from: 0-0.4"/0-10mm, 0.4-0.8"/10-20mm, 0.8-1.2"/20-30mm
- ▶ Supplied in fitted storage case



Range (Inch/mm)	Indicator Range (Inch/mm)	Indicator Graduation (Inch/mm)	Base (Inch/mm)	Item #	Price
0-1.2/0-30	0-0.5/0-12.7	0.0005/0.005	4 x 0.67/101.5 x 17	2141-102	\$ 134.40

Measuring Tool Sets

2-Piece Set

► **Set Includes:**

- 1) Electronic digital caliper (1112-150), range 0-6"/0-150mm, resolution 0.0005"/0.01mm, meets DIN862, made of hardened stainless steel, with SR44 battery, spare battery and data output via USB
 - 2) Electronic outside micrometer (without SPC), range 0-1"/0-25mm, resolution 0.00005"/0.001mm, SR44 battery, spare battery auto power off, meets DIN863, ratchet stop, anvil lock, carbide tips, with spare spherical anvil and spare battery
- Supplied in fitted storage case

Item #	Price
5002-2	\$ 157.70



3-Piece Set

► **Set Includes:**

- 1) Dial caliper (1311-6), range 0-6", graduation 0.001", meets DIN862, made of hardened stainless steel
 - 2) Outside micrometer (3202-1), range 0-1", graduation 0.0001", meets DIN 863, with ratchet stop, carbide tips and zero adjusting wrench
 - 3) Rule (7110-150), 0-6", graduations 1/32", 1/64", 1/16", made of flexible stainless steel
- Supplied in fitted storage case

Item #	Price
5003-1	\$ 94.50



7-Piece Set

► **Set Includes:**

- 1) Electronic digital caliper (1112-150), range 0-6"/0-150mm, resolution 0.0005"/0.01mm, meets DIN862, made of hardened stainless steel, with SR44 battery, spare battery and data output via USB
 - 2) Electronic outside micrometer (without SPC), range 0-1"/0-25mm, resolution 0.00005"/0.001mm, SR44 battery, spare battery, auto power off, meets DIN863, carbide tips, with spare spherical anvil and spare battery
 - 3) Electronic digital indicator, range 0-0.5"/0-10mm, resolution 0.0005"/0.01mm, auto power off, lug back, with SR44 battery, spare battery and data output via USB
 - 4) Magnetic stand, magnetic force 132 lbf, base 2.4" x 2" x 2.2" with on/off switch, with fine adjustment, main stem Ø0.470" x 6.930", assistant stem Ø3.940" x 6.3"
 - 5) Micrometer stand (6300)
 - 6) Caliper depth base attachment, length 3", provides a wide base for depth measurement with electronic digital caliper, made of stainless steel
 - 7) Zero setting bar, used as calibration tool for electronic digital caliper and depth base attachment, made of stainless steel
- Supplied in fitted storage case

Item #	Price
5007-2	\$ 315.90



Optional Data Connection Cables for Sets

Description	Item #	Price
For Electronic Caliper:	7301-SPC1	\$ 196.70
For Electronic Indicator:	7301-SPC4	106.00
<i>SPC Software for PC included with cable</i>		

Dial Bore Gages

- ▶ Indicator graduation: 0.0005"
- ▶ Indicator range: 0-0.25"
- ▶ Bezel diameter: 2.28"
- ▶ Style A: Steel moving tip and steel fixed anvil
- Style B & C: Steel moving tip and ceramic fixed anvil
- Style D: Ceramic moving tip and ceramic fixed anvil
- ▶ Supplied in fitted storage case



Range (Inch)	Depth (Inch)	Anvil Type	Item #	Price
0.24-0.4	1.57	A	2323-04	\$ 208.50
0.4-0.7	4	B	2323-07	188.20
0.7-1.5	6	C	2323-15	171.10
1.4-2.4	6	D	2323-24	154.80
2-4	6	D	2323-4	157.00
2-6	6	D	2323-6	163.00
6-10	16	D	2323-10	203.30
10-16	16	D	2323-16	237.50

Precision Dial Bore Gages

- ▶ Indicator graduation: 0.0001"
- ▶ Indicator range: 0-0.05"
- ▶ Bezel diameter: 2.28"
- ▶ Shock-proof dial indicator
- ▶ Style A: Steel moving tip and steel fixed anvil
- Style B & C: Steel moving tip and ceramic fixed anvil
- Style D: Ceramic moving tip and ceramic fixed anvil
- ▶ Supplied in fitted storage case

Range (Inch)	Depth (Inch)	Anvil Type	Item #	Price
0.24-0.4	1.57	A	2826-04	\$ 389.50
0.4-0.7	4	B	2826-07	383.90
0.7-1.5	6	C	2826-15	381.30
1.4-2.4	6	D	2826-24	365.50
2-4	6	D	2826-4	376.90
2-6	6	D	2826-6	385.90
6-10	16	D	2826-10	404.50
10-16	16	D	2826-16	421.50

Multi-Beam Electronic Height Gages



- ▶ Resolution: 0.001"/0.01mm
- ▶ Carbide-tipped scribe, stainless steel beam and base, with driving wheel for vertical movement
- ▶ Buttons: zero set, power on/off, inch/mm conversion, absolute and relative measurement, data preset, set data
- ▶ Data output via RS232 (cable included)
- ▶ Supplied in fitted storage case



Range (Inch/mm)	Number of Beams	Item #	Price
0-12/0-300	2	1151-300	\$ 667.20
0-18/0-450	2	1151-450	847.50
0-24/0-600	2	1151-600	1,079.60
0-40/0-1000	3	1151-1000	4,300.00
USB SPC Cable		7301-SPC2	\$ 196.70

SPC Software for PC included with cable

Block Levels

- ▶ Accuracy: 0.0002"/10"
- ▶ For checking horizontal surfaces and shafts
- ▶ Heat insulated grip
- ▶ Prism bottom
- ▶ Fine ground measuring surface
- ▶ Cross vial
- ▶ Supplied in fitted storage case



Size (Inch)	Item #	Price
6	4901-6	\$ 152.30
8	4901-8	170.30
12	4901-12	230.50

Indicator Holder

- ▶ Includes dovetail holder
- ▶ Supplied in storage pouch



Stem Section	Stem Length	Clamp Holes	Code	Price
9x9mm	100mm	4 and 8mm diameter	6293-1	\$ 23.40

Square Frame Levels

- ▶ Accuracy: 0.0002"/10"
- ▶ For checking horizontal and vertical surfaces and shafts
- ▶ Heat insulated handle
- ▶ Two prisms and two flat surfaces
- ▶ Fine ground measuring surfaces
- ▶ Cross vial
- ▶ Supplied in fitted storage case



Dimensions (Inch)	Item #	Price
4 x 4	4902-4	\$ 169.80
6 x 6	4902-6	172.20
8 x 8	4902-8	188.70
12 x 12	4902-12	282.20

Electronic Protractor and Level

- ▶ 6" overall length
- ▶ Used as level and/or protractor
- ▶ Buttons: data hold, zero set, power on/off, absolute and relative measurement
- ▶ Four work surfaces
- ▶ Display rotates when level is upside down
- ▶ CR2032 battery
- ▶ Stainless steel frame
- ▶ Supplied in leather pouch



Range	Resolution	Item #	Price
0-360°	0.1°	2173-360	\$ 147.10

Electronic Protractor



- ▶ Display in degrees and degrees/minutes/seconds
- ▶ Buttons: preset (preset any angle), mode (choose 0-90°, 0-180° or 0-360°), zero/on (zero set and power on), "+/-" – for measuring direction change from zero set
- ▶ Stainless steel with satin chrome plated scale
- ▶ With fine adjustment and small angle attachment
- ▶ Two blades: 6"/150mm and 12"/300mm
- ▶ Supplied with standard square for 90° set
- ▶ Supplied in fitted storage case

Range	Resolution	Item #	Price
0-360°	30"/0.005°	2172-360	\$ 531.10

Protractor



- ▶ Graduations: 5'
- ▶ Parallax-free reading
- ▶ Stainless steel with satin chrome plated scale
- ▶ With fine adjustment and locking clamp
- ▶ Two blades: 6"/150mm and 12"/300mm
- ▶ With magnifier lens and small angle attachment
- ▶ Supplied in fitted storage case



Clamp for height gage sold separately

Range	Item #	Price	Item #	Price
0-360°	2372-360	\$ 116.60	2372-CLAMP	\$ 18.90

Dial Protractor



- ▶ Dial graduation: 5'
- ▶ Stainless steel
- ▶ With locking clamp
- ▶ Two blades: 6"/150mm and 12"/300mm
- ▶ With small angle attachment
- ▶ Supplied in fitted storage case



Clamp for height gage sold separately

Range	Item #	Price	Item #	Price
0-360°	2373-360	\$ 132.90	2372-CLAMP	\$ 18.90

Combination Square



- ▶ Blade graduation: 2278-180 1/32" and 0.5mm on one side, 1/64" and 1mm on reverse side
2278-180E 1/8" and 1/16" on one side, 1/32" and 1/64" on reverse side
- ▶ Used as square, level, marking gage, scribe, center gage, protractor and 12" steel rule
- ▶ Square 90° and 45°, with level and scribe
- ▶ Protractor graduated 180° in both directions, with level
- ▶ Supplied in fitted storage case

Item #	Price
2278-180	\$ 131.80
2278-180E	131.80

Double Squares

- ▶ Hardened blade, satin chrome finish
- ▶ Supplied in storage case



Blade Length	Graduations	Code	Price
4"	1/8", 1/16", 1/32", 1/64"	2277-1	\$ 41.40
6"	1/8", 1/16", 1/32", 1/64"	2277-2	46.10
4"/100mm	1/32", 1/64", 0.5mm, 1mm	2277-3	41.40
6"/150mm	1/32", 1/64", 0.5mm, 1mm	2277-4	46.10

90° Flat Edge Squares

- ▶ Meets DIN875 standard, grade 0
- ▶ Flat edge
- ▶ Hardened stainless steel
- ▶ Lapped measuring faces
- ▶ Supplied in fitted storage case



Dimensions (Inch/mm)	Item #	Price
2 x 1.5/50 x 40	4791-50	\$ 34.80
3 x 2/75 x 50	4791-75	39.30
4 x 2.75/100 x 70	4791-100	45.80
6 x 4/150 x 100	4791-150	68.70
8 x 5/200 x 130	4791-200	88.90
12 x 8/300 x 200	4791-300	126.50

90° Knife Edge Squares

- ▶ Meets DIN875 standard, grade 00
- ▶ Two knife edges on upright blade
- ▶ Hardened stainless steel
- ▶ Lapped measuring faces
- ▶ Supplied in fitted storage case



Dimensions (Inch/mm)	Item #	Price
2 x 1.5/50 x 40	4790-050	\$ 40.30
3 x 2/75 x 50	4790-075	45.60
4 x 2.75/100 x 70	4790-0100	52.50
6 x 4/150 x 100	4790-0150	87.00
8 x 5/200 x 130	4790-0200	111.60
12 x 8/300 x 200	4790-0300	211.00

Radius Gage Sets

- ▶ Precision ground alloy steel
- ▶ Each piece has five concave or convex gaging surfaces
- ▶ Supplied in storage pouch



INCH

Range (Inch)	Blade Size (Inch)	Blade Quantity	Handle	Item #	Price
1/64-1/2	1/64, 1/32, 3/64, 1/16, 5/64, 3/32, 7/64, 1/8, 9/64, 5/32, 11/64, 3/16, 7/32, 15/64, 1/4, 17/64, 9/32, 5/16, 11/32, 3/8, 13/32, 7/16, 15/32, 1/2	25	Included	4804-25E	\$ 49.70
9/16-1	9/16, 5/8, 11/16, 3/4, 13/16, 7/8, 15/16, 1	8	N/A	4804-8E	72.10

METRIC

Range (mm)	Blade Size (mm)	Blade Quantity	Handle	Item #	Price
0.5-13	0.5, 1, 1.5, 2, 2.5, 3, 3.5, 4, 4.5, 5, 5.5, 6, 6.5, 7, 7.5, 8, 8.5, 9, 9.5, 10, 10.5, 11, 11.5, 12, 12.5, 13	26	Included	4804-26	\$ 51.60

Acme Screw Pitch Gages



- ▶ Alloy steel
- ▶ Blades individually marked with pitch
- ▶ Supplied in storage pouch

Range (TPI)	Thread Type	Blade Pitch (TPI)	No. of Blades	Item #	Price
1-12	29°	1, 1-1/3, 1-1/2, 1-3/4, 2, 2-1/2, 3, 3-1/2, 4, 5, 6, 7, 8, 9, 10, 12	16	4824-16	\$ 52.10
Range (mm)	Thread Type	Blade Pitch (mm)	No. of Blades	Item #	Price
2-20	30°	2, 3, 4, 5, 6, 7, 8, 9, 10, 12, 16, 20	12	4824-12	\$ 46.50

Inch Rectangular Gage Block Sets

- ▶ Alloy Steel
- ▶ Blocks individually serialized
- ▶ Manufacturing compliance certificate with deviation readings
- ▶ Meets ASME B89.1.9-2002 standard grade 0
- ▶ Supplied in fitted storage case



Other inch and metric sets are available upon request

36-Piece Set

Size (Inch)	Step (Inch)	Item #	Price
0.05		4102-36	\$ 457.00
0.1001-0.1009	0.0001		
0.101-0.109	0.001		
0.11-0.19	0.01		
0.1-0.5	0.1		
1			
2			
4			

81-Piece Set

Size (Inch)	Step (Inch)	Item #	Price
0.1001-0.1009	0.0001	4102-81	\$ 773.00
0.101-0.149	0.001		
0.05-0.95	0.05		
1-4	1		

Unified 60° Screw Pitch Gages

- ▶ Alloy steel
- ▶ Blades individually marked with pitch



Range (TPI)	Blade Pitch (TPI)	No. of Blades	Item #	Price
4-42	4, 4-1/2, 5, 5-1/2, 6, 7, 8, 9, 10, 11, 11-1/2, 12, 13, 14, 15, 16, 18, 20, 22, 24, 26, 27, 28, 30, 32, 34, 36, 38, 40, 42	30	4820-230	\$ 11.00
4-62	4, 4-1/2, 5, 6, 7, 8, 9, 10, 11, 12, 13, 14, 15, 16, 18, 20, 22, 24, 32, 40, 48, 56, 62	23	4820-223	9.00

Small Hole Gage Set

- ▶ For small holes, slots, grooves, etc.
- ▶ Satin chrome finish
- ▶ Supplied in storage pouch



4 Piece Set Includes:

- A: 0.125" to 0.200" (3mm to 5mm)
- B: 0.200" to 0.300" (5mm to 7.5mm)
- C: 0.300" to 0.400" (7.5mm to 10mm)
- D: 0.400" to 0.500" (10mm to 13mm)

Range (Inch/mm)	Item #	Price
0.125-0.500/3-13	4208-1	\$ 23.70

Telescoping Gage Set

- ▶ Self centering feature for quick measurement of inside diameters of hole and widths of slots
- ▶ Both gaging ends are heat treated stainless steel and ground to a sphere
- ▶ Satin chrome finish
- ▶ Supplied in storage pouch



6 Piece Set Includes:

- A: 5/16" to 1/2" (8mm to 12.7mm)
- B: 1/2" to 3/4" (12.7mm to 19mm)
- C: 3/4" to 1-1/4" (19mm to 32mm)
- D: 1-1/4" to 2-1/8" (32mm to 54mm)
- E: 2-1/8" to 3-1/2" (54mm to 90mm)
- F: 3-1/2" to 6" (90mm to 150mm)

Range Inch (mm)	Item #	Price
5/16-6 (8-150)	4206-1	\$ 37.80

Long Handle Telescoping Gages



- ▶ Self centering feature for quick measurement of inside diameters of holes and widths of slots
- ▶ Both gaging ends are heat treated stainless steel and ground to a sphere
- ▶ Satin chrome finish
- ▶ Supplied in storage pouch

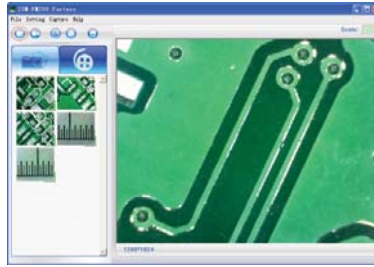
Handle Length (Inch/mm)	Range (Inch/mm)	Item #	Price
10/250	5/16 to 1/2 / 8 to 12.7	4209-1	\$ 10.30
10/250	1/2 to 3/4 / 12.7 to 19	4209-2	10.30
10/250	3/4 to 1-1/4 / 19 to 32	4209-3	10.30
12/300	1-1/4 to 2-1/8 / 32 to 54	4209-4	12.00
12/300	2-1/8 to 3-1/2 / 54 to 90	4209-5	12.00
12/300	3-1/2 to 6 / 90 to 150	4209-6	12.00
12/300	4-3/4 to 8 / 120 to 200	4209-7	17.80

INSIZE TOOLS THAT MEASURE UP!

Digital Microscope with Stand



- ▶ Records photos and video
- ▶ Supplied with geometric software for measurement
- ▶ Built in adjustable LED illuminator
- ▶ Two step adjustable focus with 10X to 200X magnification
- ▶ Image sensor: 1.3 mega pixels
- ▶ Resolution: 1280 x 1024
- ▶ Dimensions: Ø1.4173" x 5.0394" (without stand)
- ▶ Power Supply: 5V DV from USB port
- ▶ Includes stand, two calibration rules – graduations 0.1mm and 1mm, focus ring supports for 80X/150X and 60X/200X magnification, software CD (requires Windows XP SP2, Vista or Windows 7 operating system)



Screen capture of photo measurement

Item #	Price
ISM-PM200S	\$ 357.70

Wireless Digital Microscope (Optional Stand)

- ▶ Records photos and video
- ▶ Supplied with geometric software for measurement
- ▶ Built in adjustable LED illuminator
- ▶ Two step adjustable focus with 10X to 200X magnification
- ▶ Transmission distance: max. 10m/32.8ft
- ▶ Image sensor: 0.35 mega pixels
- ▶ Resolution: 720 x 480
- ▶ Dimensions: Ø36 x 138mm
- ▶ Power Supply: built in rechargeable battery
- ▶ Includes two calibration rules – graduations 0.1mm and 1mm, focus ring supports for 80X/150X and 60X/200X magnification, software CD, and AC/DC adapter (requires Windows XP SP2, Vista or Windows 7 operating system)



Item #	Price
ISM-WM200-U	\$ 450.20

Item #	Price
ISM-PM200S-SP1	\$ 112.70

Portable Hardness Tester

- ▶ Hardness: Leib, Rockwell B, Rockwell C, Vickers, Brinell, Shore
- ▶ Resolution: 1HL, 0.1HRB, 0.1HRC, 1HV, 1HB, 1HS, 1MPa
- ▶ Accuracy: ±6HL (HL=800)
- ▶ Workpiece specifications:
 - min. weight: 11lbs/5kg; min. thickness: 0.2"/5mm; min. thickness of layers: 0.03"/0.8mm;
 - min. radius of curved surface: 0.43"/11mm
- ▶ Working temperature: 32°F-122°F (0°C-50°C)
- ▶ Battery operated (rechargeable), with battery power indicator
- ▶ Large LCD display with back light includes: scale, hardness value, average value, test times, date, impact direction, material
- ▶ Output: wireless IR (infrared) and USB
- ▶ Low and high limit settings
- ▶ Dimensions: 5.9055" x 3.1496" x 0.9449"
- ▶ Supplied in fitted storage case



- ▶ **Includes:**
- 1) Main unit
 - 2) Printer
 - 3) Impact device "D"
 - 4) Cleaning brush for impact device
 - 5) Supporting ring for impact device

Item #	Price
ISH-PHA	\$ 2,090.00



Precision Measuring Instruments

www.insize-usa.com

Insized USA

Tel: 877-846-7403 Fax: 800-345-8656

sales@insize-usa.com

Prices subject to change without notice

