



# PROMOTIONS

*Valid from July 1st to December 15th, 2025*

2nd half  
2025

## 3D PRESSED-IN CHIPBREAKER SERIES DEDICATED FOR TURNING SMALL PARTS

JP Chipbreaker, first choice chipbreaker for high precision finishing

JS Chipbreaker, first choice chipbreaker for finish cutting

**BUY 30 inserts**

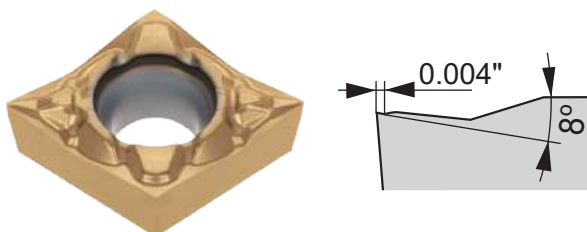
AND

**GET 10** corresponding  
inserts

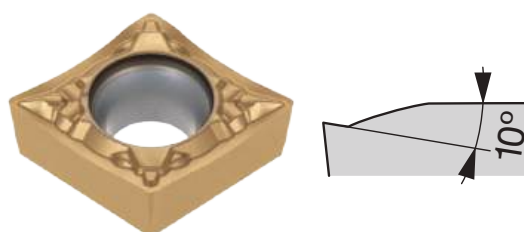
**FREE**  
of charge!  
Promo Code: TG239

Available Grades: SH7025, SH725, SH730, AH6225,  
AH8015, AH725, NS9530, KS05F and AT9530

JP Chipbreaker



JS Chipbreaker



- Stable chip control across wide feed and D.O.C. ranges
- Prevents chip nesting, vibration, and burrs
- Enhances part quality and shop productivity
- Versatile geometry for broad application use

- Light cutting action with excellent chip control
- Steep edge angle reduces cutting load
- Unique protrusion manages chip flow across all depths

e-catalog



## INNOVATIVE GROOVING TOOLS WITH 4 CUTTING-EDGE INSERTS

The ground insert clamps securely into a unique insert pocket, ensuring high rigidity and repeatability. It is paired with high-productivity PVD grades such as AH7025, AH8005, and AH6235

**BUY 10 inserts**

AND

**GET 1** corresponding toolholder at

**60 %**  
additional discount!  
Promo Code: TG241

**BUY 10 inserts**

AND

**GET 1** corresponding CHP toolholder at

**40 %**  
additional discount!  
Promo Code: TG241

Inserts (Grades AH7025, AH8005 and AH6235):

TCL27/38

TCS27

TCM27

Toolholder:

STCR/L

STCR/L-CHP



e-catalog





## NEW SMALL-SIZE DOUBLE-ENDED INSERTS FOR INTERNAL GROOVING

Optimized screw placement boosts clamping strength and chatter resistance, while larger pockets improve chip evacuation and internal coolant enhances performance.

**BUY 20 inserts**

AND

**GET 1** modular head or toolholder

**FREE**  
of charge!  
Promo Code: TG240

**BUY 20 inserts**

AND

**GET 1** corresponding CHP toolholder at

**50 %**  
additional discount!  
Promo Code: TG240

### Inserts:

DGS\*S (AH725, SH7025)

DTR\*S (AH7025)

STV\*S (AH725)

### Toolholder:

CTIR\*\*S

### Modular head:

S-CTIRS-H (BoreMeister)

QC-JTTER/LS (ModuMiniTurn)

CTIR\*\*S

S-CTIRS-H

QC-JTTER/LS



**DGS\*S**

Lower cutting force and superior sharpness  
**CW** = 0.079" - 0.118"  
(2 - 3 mm)



**DTR\*S**

Full radius type  
**CW** = 0.079" - 0.118"  
(2 - 3 mm)



**STV\*S**

For profiling applications

e-catalog



## VERSATILE SHOULDER MILLING CUTTER WITH UNIQUE V-SHAPED INSERT BOTTOM FOR MAXIMUM PRODUCTIVITY

Unmatched stability across all materials, with an innovative clamping system

**BUY** 10 inserts per  
**AND** pocket UP TO MAX 50 INSERTS  
**GET** 1 Cutter

**FREE**  
of charge!

Size 12 Promo Code: TG246  
Size 18 Promo Code: TG247

Limited up to diameter 5" (125 mm)

Inserts (Grades: AH3225, AH3135, AH8015,  
AH120, AH130, T1215, T3225 and KS05F):

AV\*T12, AV\*T18

### Cutter bodies:

Bore type:

TPAV\*\*

DC =  $\varnothing 1.5''$  -  $\varnothing 5''$   
( $\varnothing 40$  -  $\varnothing 125$  mm)

Shank type:

EPAV\*\*

DC =  $\varnothing 0.625''$  -  $\varnothing 1.250''$   
( $\varnothing 12$  -  $\varnothing 32$  mm)

### Modular type:

HPAV\*\*-M (TungFlex connection)

DC =  $\varnothing 10$  -  $\varnothing 40$  mm

HPAV06-S (TungMeister connection)

DC =  $\varnothing 10$  -  $\varnothing 16$  mm



**AV\*T12**  
APMX:  
0.453" (11.5 mm)



**AV\*T18**  
APMX:  
0.650" (16.5 mm)



e-catalog



Member MC Group  
**Tungaloy**



# HIGH PRODUCTIVE AND COST-EFFECTIVE SHOULDER MILLING CUTTER

Economical shoulder mill with an innovative 6-edged geometry offers maximum performance in various applications

**BUY** 10 inserts per pocket  
**AND** pocket UP TO MAX 50 INSERTS  
**GET** 1 Cutter

**FREE**  
of charge!

Size 07 Promo Code: T6248  
Size 12 Promo Code: T6249

Limited up to diameter 5" (125 mm)

Insert (Grades: AH3225, AH3135, AH120, T1215, T3225):

TN MU07-MJ, TN\*U12-MJ, TN MU12-NMJ

**Cutter bodies:**

Bore type:

**TPTN07/12**

DCX =  $\varnothing 2''$  -  $\varnothing 5''$

( $\varnothing 40$  -  $\varnothing 125$  mm)

Shank type:

**EPTN07/12**

DCX =  $\varnothing 0.750''$  -  $\varnothing 1.50''$

( $\varnothing 18$  -  $\varnothing 40$  mm)



**TN MU07-MJ**  
with built-in wipers  
APMX = 0.256"  
(6.5 mm)



**TN GU12-MJ**  
with built-in wipers  
APMX = 0.433"  
(11 mm)



**TN MU12-R-MJ**  
Radius insert  
APMX = 0.433"  
(11 mm)



**TN MU12-NMJ**  
Serrated insert  
APMX = 0.433"  
(11 mm)



e-catalog



Member IMC Group  
**Tungaloy**

## HIGH FEED MILLING CUTTERS ENABLING LONG OVERHANG APPLICATIONS AND EXTENDED TOOL LIFE

Optimal depth of cut can be selected in machining various work materials

**BUY** 10 inserts per  
AND pocket UP TO MAX 50 INSERTS  
**GET** 1 Cutter

**FREE**  
of charge!  
Promo Code: TG243

Limited up to diameter 5" (125 mm)

Inserts (Grades: AH3225, AH3135, AH120, AH130 AH8015):

SWMT09/15ZER  
SWMT09/15UER  
SWMW09ZSR  
SWMW09/15USR

**Cutter bodies:**

Bore type:

TXSW09/15

DCX =  $\phi 1.50$ " -  $\phi 5$ " ( $\phi 40$  -  $\phi 125$  mm)

Shank type:

EXSW09

DCX =  $\phi 1.00$ " -  $\phi 1.25$ " ( $\phi 25$  -  $\phi 32$  mm)

Modular type:

HXSW09 (TungFlex connection)

DCX =  $\phi 25$  -  $\phi 32$  mm



**SWMT09/15\*\*ZER**  
APMX:  
SWMT09\*\*ZER: 0.059"  
(1.5 mm)  
SWMT15\*\*ZER: 0.098"  
(2.5 mm)



**SWMW09ZSR**  
APMX: 0.059"  
(1.5mm)



**SWMT09/15\*\*UER**  
APMX:  
SWMT09\*\*UER: 0.039"  
(1 mm)  
SWMT15\*\*UER: 0.078"  
(2 mm)



**SWMW09/15USR**  
APMX:  
SWMW09\*\*USR : 0.039"  
(1 mm)  
SWMW15\*\*USR : 0.078"  
(2 mm)



e-catalog





## EXCHANGEABLE HEAD DRILL SYSTEM FOR SUPERIOR DRILLING PERFORMANCE AND LONG TOOL LIFE

Quick drill tip change for reduced machine downtime.

Tool inventory and management costs are significantly reduced as there is no need for regrinding.

**BUY** 4 drill heads

AND

**GET** 1 drill body at  
UP TO 3.5xD

**50 %**  
*additional discount!*

### Promo Codes:

1.5-2xD: TG251

3-3.5xD: TG252

5-6xD: TG253

8xD: TG254

Modular: TG255

Inch Chamfering: TG256

**BUY** 6 drill heads

AND

**GET** 1 drill body at  
UP TO 6xD

**50 %**  
*additional discount!*

Drill heads (Grades: AH725, AH9130, KS15F):

DMP, DMC, DMF, DMH, DMN, DMM

### Drill bodies:

TID-F (1.5xD, 3xD, 5xD, 8xD)

TID-R (2xD, 3.5xD, 6xD, 8xD)

TIDC (3xD, 5xD)

**BUY** 8 drill heads

AND

**GET** 1 drill body at  
UP TO 8xD

**50 %**  
*additional discount!*

### Modular drill bodies:

TID-M (2xD, 3xD)

TID-S (2xD)

TID-L-A-M

e-catalog





## DRILL HEADS LINEUP



**DMP**

Drill dia.:  
ø0.236" - ø1.020"  
(ø6 - ø25.9 mm)

General purpose drilling  
head ideal for various drilling  
applications



**DMC**

Drill dia.:  
ø0.236" - ø1.020"  
(ø6 - ø25.9 mm)

High-precision head with double  
margin and self-centering edge



**DMF**

Drill dia.:  
ø0.236" - ø1.020"  
(ø6 - ø25.9 mm)

180° flat edges for  
counterboring and flat bottoms



**DMH**

Drill dia.:  
ø0.236" - ø1.020"  
(ø6 - ø25.9 mm)

General purpose head with  
enhanced cutting edge



**DMN**

Drill dia.:  
ø0.268" - ø0.768"  
(ø6.8 - ø19.5 mm)  
Drill head with sharp  
edges for non-ferrous  
materials



**DMM**

Drill dia.:  
ø0.393" - ø0.657"  
(ø10 - ø16.7 mm)  
General purpose drilling  
head for Stainless Steel  
materials

## DRILL BODIES LINEUP



**TIDC**

Drill dia.:  
ø0.295" - ø0.783"  
(ø7.5 - ø19.9 mm)  
3xD and 5xD



**TID-F**

Drill dia.:  
ø0.236" - ø1.020"  
(ø6 - ø25.9 mm)  
1.5xD, 3xD, 5xD, 8xD



**TID-R / TID-R-E**

Drill dia.:  
ø0.236" - ø0.783"  
(ø6 - ø19.9 mm)  
2xD, 3.5xD, 6xD, 8xD

## MODULAR DRILL BODIES LINEUP

video



**TID-M**

Drill dia.:  
ø0.236" - ø0.744"  
(ø6 - ø18.9 mm)  
2xD and 3xD  
TungFlex connection



**TID-S**

Drill dia.:  
ø0.256" - ø0.429"  
(ø6.5 - ø10.9 mm)  
2xD  
TungMeister connection

video



**TID-L-A-M**

Drill dia.:  
ø0.256" - ø0.665"  
(ø6.5 - ø16.9 mm)  
TungFlex connection  
Drilling+Chamfering /  
pre-thread Drilling

## INDEXABLE DRILL WITH ECONOMICAL 6 CUTTING EDGED INSERT

AH7020 and AH7030 insert grades developed specifically for drilling applications for prolonged insert tool life.

**BUY 20 inserts**

AND

**GET 1 drill body at**

**50 %  
additional  
discount!**  
Promo Code: TG258

Inserts (Grades: AH7020, AH7030):

WWMU-DJ / -DS

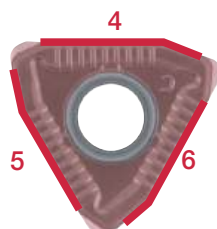
Drill bodies:

TDS-F (2xD, 3xD, 4xD)

Peripheral cutting edges



Center cutting edges



**TDS-F**

Drill dia.:

ø0.750" - ø2.000"

(ø20 - ø54 mm)

2xD, 3xD, 4xD

learn more



## A WIDE RANGE OF INDEXABLE DRILLS FOR VARIOUS APPLICATIONS

AH7020 and AH7030 insert grades developed specifically for drilling applications for prolonged insert tool life.

**BUY 20 inserts**

AND

**GET 1 drill body at**

**50 %  
additional  
discount!**  
Promo Code: TG257

**Inserts (Grades: AH7020, AH7030):**

XPMT-DJ / -DS / -DW

**Drill bodies:**

TDX-F (2xD, 3xD, 4xD, 5xD)



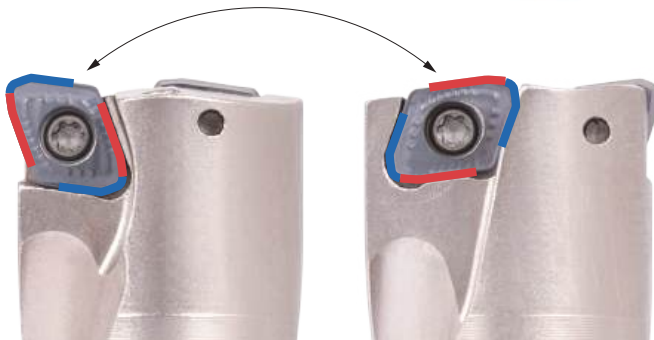
**TDX-F**

Drill dia.:

ø0.500" - ø2.125"

ø12.5 - ø54 mm

2xD, 3xD, 4xD, 5xD



One insert fits both center and peripheral edges,  
reducing inventory and cost.

learn more





# TMV chipbreaker wiper inserts

Valid from July 1st to December 15th, 2025

**NTK**

TURNING & MINIATURE

## OUTSTANDING CHIPBREAKER FOR CONVENTIONAL AND VIBRATION MACHINING

TMV-wiper insert delivers superior surface finish even at high feed rates, contributing to longer tool life by enabling increased feed.

**BUY 20 inserts**

AND

**GET 10 Corresponding inserts**

**FREE**  
of charge!  
Promo Code: NW006

Inserts (Grades NTK650, ST4):  
DCGT



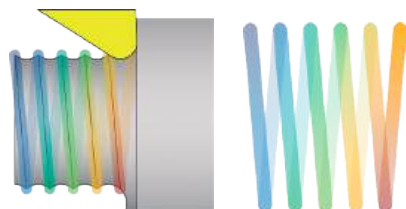
DCGT

Shape to prevent cutting edge damage from chipping

Rake face shape to withstand high cutting feeds

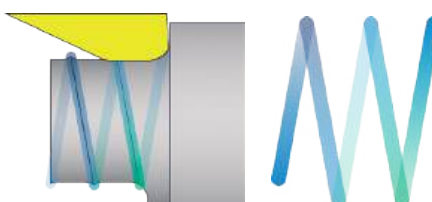
Controls chip flow reliably

### Conventional Tool Path Length



Conventional feed: **0.00197 in/rev (0.05 mm/rev)**  
Tool path length: **1,236" (31.4 m)**

### TMV-WP Halves Your Tool-Path Length at High Feeds



TMV-WP feed: **0.00394 in/rev (0.10 mm/rev)**  
Tool path length: **618" (15.7 m)**

Faster cycle times thanks to higher feed rates

Wiper geometry preserves a fine surface finish

Higher feed = shorter tool-path length = longer tool life

web



# The Front Max

Valid from July 1st to December 15th, 2025

# NTK

## TURNING & MINIATURE

## EFFICIENT SINGLE-PASS TURNING WITH DEPTHS OF CUT UP TO 0.196" (5.0 MM)

Achieve up to 0.196" (5.0 mm) depth of cut with TFX advanced insert geometry and coolant-through holders for superior chip control, surface finish, and stability.

**BUY 20 inserts**

AND

**GET 1** Corresponding toolholder

**FREE**  
of charge!

Promo Code: NW007

**BUY 20 inserts**

AND

**GET 1** Corresponding coolant through toolholder

**50 %**  
additional discount!

Promo Code: NW007

Inserts (Grades DM4, ST4):

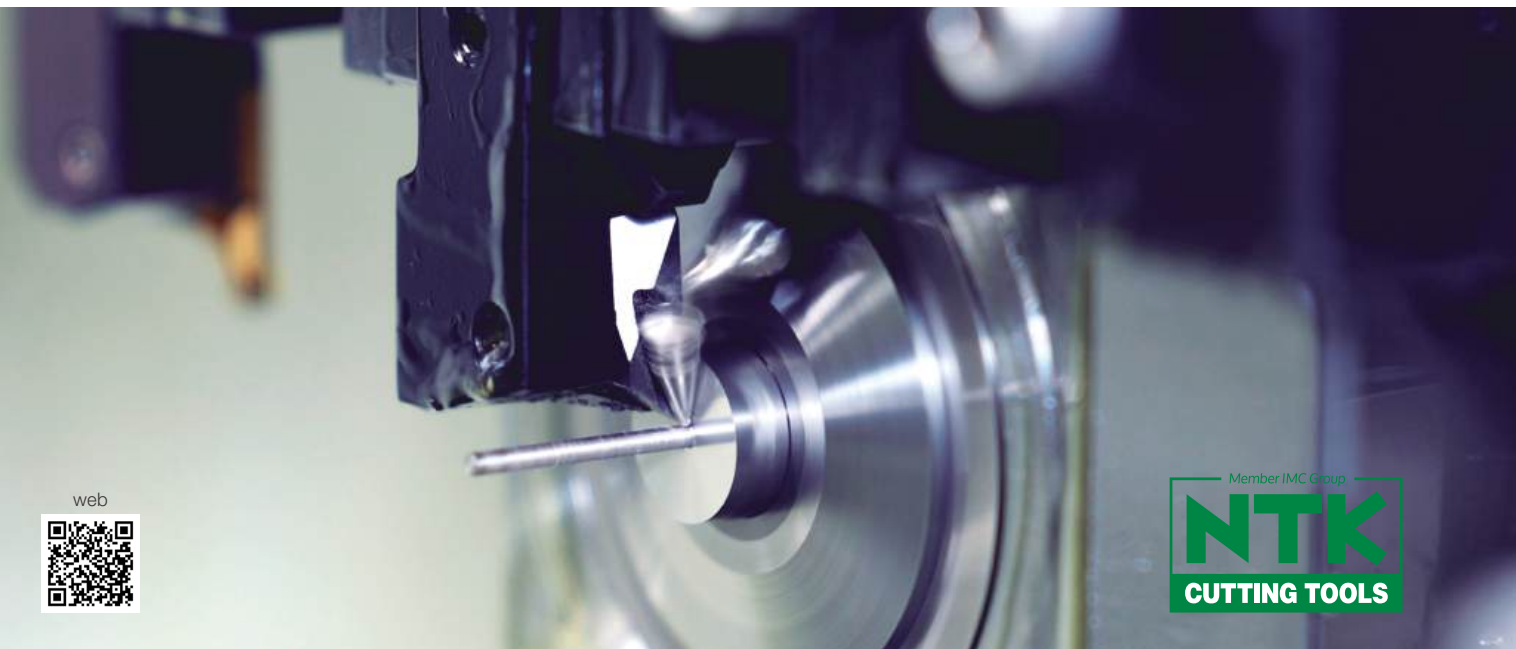
TFX

Toolholders:

TFT

TFT-OH2

TFTR-OH3



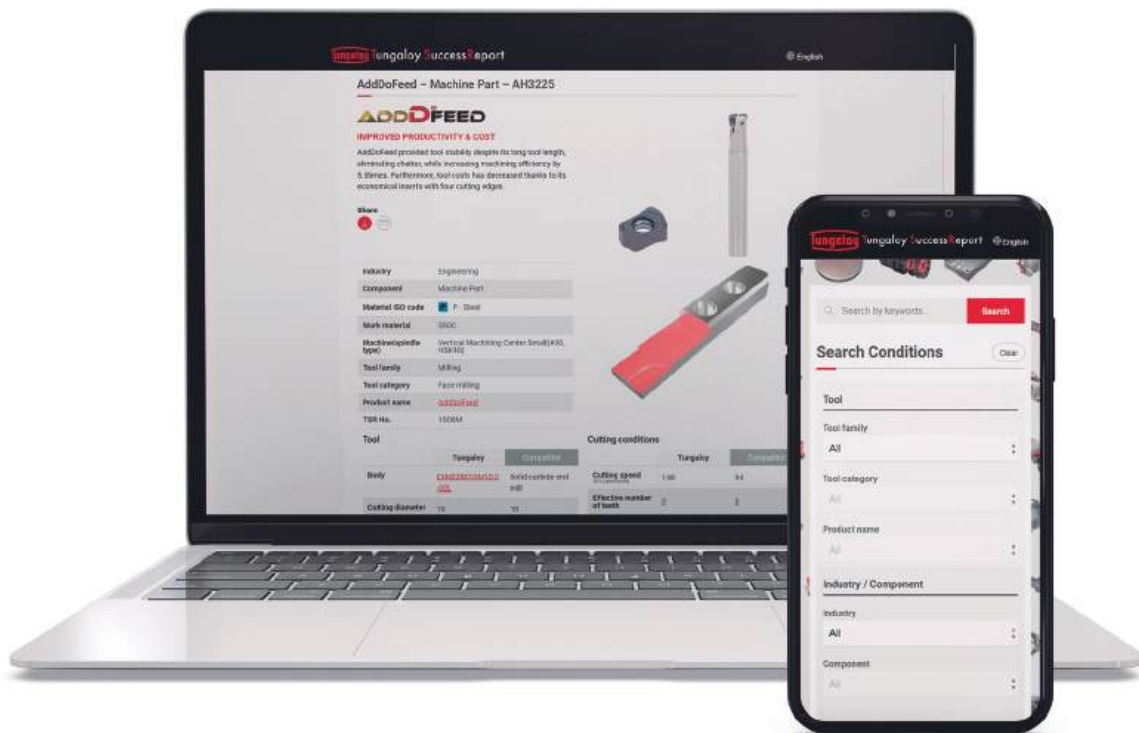
web



# YOUR GATEWAY TO TUNGALOY & NTK SUCCESS REPORTS!

We invite you to visit the updated TSR platform and discover how Tungaloy and NTK's products have successfully met diverse challenges and delivered outstanding results. These reports can provide insights and inspiration for your own applications and projects, offering detailed solutions to succeed in various industrial fields.

Find applications that fit your current needs, elevate your productivity, and solve your production bottlenecks.



[tsr.tungaloy.com](https://tsr.tungaloy.com)



## MEMO



**Tungaloy-NTK America, Inc.**  
3726 N Ventura Drive,  
Arlington Heights, IL 60004, U.S.A  
[tungaloy.com/us](http://tungaloy.com/us)  
[ntkcuttingtools.com/us](http://ntkcuttingtools.com/us)

L e a d i n g   i n   I n n o v a t i o n

Distributed by:



Jun. 2025 (TA)